



**St. Andrew's
Primary School**

learning together,
we reach for the stars

St. Andrew's Primary School,

Jenkins Street,
Newport.
NP19 0GR

Head teacher: Mrs J Giles

Telephone: 01633 257261 Email: standrews.primary@newportschools.wales

Website: www.standrews.wales



Date of Newsletter: 8th January 2024

Spring Term 2024

Dates of term are:

Monday 8th January – Friday 22nd March

Half term is Mon. 12th Feb. – Fri. 16th Feb. 2024

**Welcome back to the spring term –
on behalf of all the staff we wish
you a very
Happy New Year!**

Blwyddyn Newydd Dda!

Giglets Reading Challenge – January

Each year group has been allocated a book to read at home as part of our Giglets reading challenge!

Please see the list below of the books and encourage your child to read this book – It can be read together, used as a bedtime story or your child can have a go at reading it!

Please speak to your child's class teacher if you are unsure of child's log in details.



Reception – All Aboard the Bus



Year 1 and 2 – How to Draw a Penguin



Year 3 and 4 – Later



Year 5 and 6 – The Magic Mirror

School Admissions – Reception September 2024

The deadline for application to Reception 2024 is **9th January 2024**. We have e-mailed all Nursery parents who haven't yet applied but please let your neighbours / relatives know that if they have a child who will be 4 in September 2024 and ready to start school applications need to be submitted by 9.1.24.

More information can be found on:

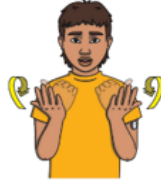
[School admissions application timetables | Newport City Council](#)

As part of Curriculum for Wales, learners at St. Andrew's will be learning and using British Sign Language (BSL) as an international language.

Please see below the signs learners will be engaging with this half term! You can also learn and share this learning with your child at home!



Please



You're welcome



My name is...



Sorry



Happy



Sad

Ymadrodd yr Wythnos - Phrase of the Week

Pob lwc

Click the link below or scan the QR code to hear a member of Criw Cymraeg pronounce the Phrase of the Week and explain when it can be used. Use this phrase at home and share a video or picture through Seesaw to earn a Dojo point.

[Phrase of the Week – Pob Lwc](#)



Year 1 really enjoyed marking two of the St. Andrew's 50 things during the last week of term.

We went on a treasure hunt with the help of the Christmas elves, visited Santa and played on the park (even if it was raining!) We also played musical statues in the bandstand while waiting to play on the park.



Year 1 Visit
to Bellevue
Park.

18.12.23



Parent Information



St. Andrew's Primary School



Family and Community Engagement Menu- Spring 1, 2024

Event	Details
1CB Class Assembly	Thursday 18 th January in the Milner Hall
3AM Class Assembly	Thursday 25 th January at the Connect Centre
GEMS Coffee and Chat	Thursday 25 th January 9.00-10.00am in the Family Engagement Room
Community Crafternoon	Friday 26 th January 1.30-3.00pm in the Milner Hall
4KW Class Assembly	Thursday 1 st February at the Connect Centre
ALN Coffee and Chat	Thursday 1 st February 9.00-10.00am in the Family Engagement Room
2JE Class Assembly	Thursday 8 th February in the Milner Hall
Cultural Diversity Week- Parent Planning Group	Thursday 22 nd February 9.00-10.00am in the Family Engagement Room



Please follow us on [Facebook](#) or Twitter @5tAndrews for regular updates from St. Andrew's Primary School.



St. Andrew's Family and Community Engagement (FaCE) Group

Scan QR code to join our Facebook group



SNAP Cymru Presents:

From SEN To ALN

A unique event for parents and carers of any child or young person (0-25) who requires Additional Learning Needs support in School or College

Join us in person:
10:00am to 1:00pm on Thursday 25th January at Pill Millennium Centre, Courtybella Ter, Newport NP20 2LA

- Meet other families of children and young people with Additional Learning Needs and Disabilities
- Share your thoughts and opinions to help shape the future of ALN support in Wales
- Learn all about the new ALN System in Wales

Book your FREE space via this link:
<https://www.eventbrite.co.uk/e/newport-from-sen-to-aln-casnewydd-o-aaa-i-ady-tickets-777619570067>

This event is funded by the Welsh Government

Arferir gan Lywodraeth Cymru
 Funded by Welsh Government

The Queen's Diamond Jubilee Volunteering Award 2012

SQM MEMBER

HelpLines

INVESTING IN US

Emotionally Based School Avoidance (EBSA) Peer-Support Group for Parents & Caregivers

Join us for a relaxed chat with our lived experience volunteers, gain insight and support with your own situation

Newport Mind
100-101 Commercial Street

2nd Tuesday of every month
10am to 12pm

 mind Newport Casnewydd



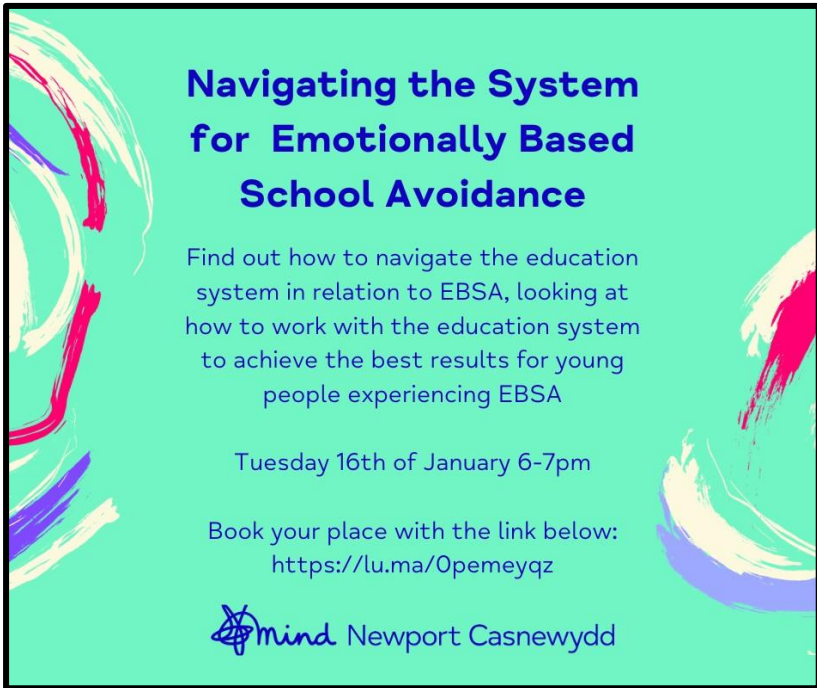
Navigating the System for Emotionally Based School Avoidance

Find out how to navigate the education system in relation to EBSA, looking at how to work with the education system to achieve the best results for young people experiencing EBSA

Tuesday 16th of January 6-7pm

Book your place with the link below:
<https://lu.ma/Opemeyqz>

 mind Newport Casnewydd



FREE SCHOOL MEAL AND UNIFORM GRANT



Apply Now



IF YOU ARE YOU ARE IN RECEIPT OF ANY OF THE BENEFITS LISTED BELOW, PLEASE COMPLETE A FREE SCHOOL MEAL APPLICATION AS YOU MAY BE ELIGIBLE FOR ADDITIONAL GRANTS FOR SCHOOL UNIFORM.

YOU CAN APPLY ONLINE AT
WWW.NEWPORT.GOV.UK/FREESCHOOLMEALS.

QUALIFYING BENEFITS INCLUDE:

INCOME SUPPORT
INCOME-BASED JOBSEEKER'S ALLOWANCE
INCOME-RELATED EMPLOYMENT AND SUPPORT ALLOWANCE
SUPPORT UNDER PART VI OF THE IMMIGRATION AND ASYLUM ACT 1999
THE GUARANTEED ELEMENT OF PENSION CREDIT
CHILD TAX CREDIT (PROVIDED NOT ALSO ENTITLED TO WORKING TAX CREDIT AND HAVE AN ANNUAL GROSS INCOME OF NO MORE THAN £16,190)
WORKING TAX CREDIT RUN-ON - PAID FOR 4 WEEKS AFTER YOU STOP QUALIFYING FOR WORKING TAX CREDIT
UNIVERSAL CREDIT

